

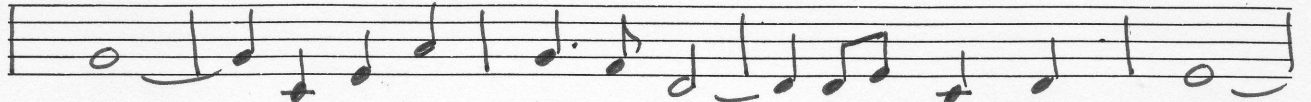
I CAN'T STOP LOVING YOU

By DON GIBSON

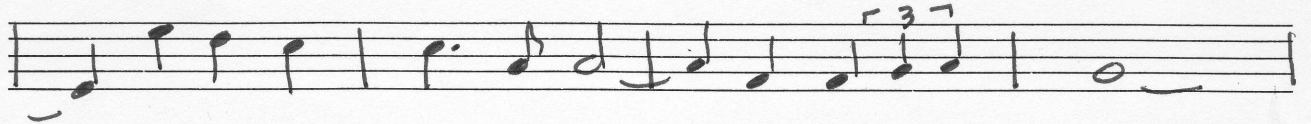
VOCAL *Slowly with expression*



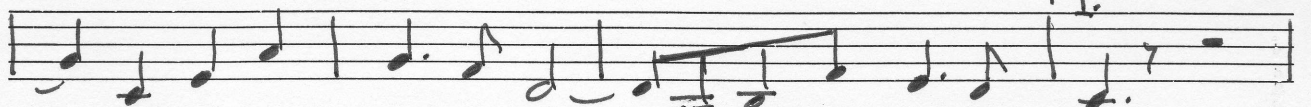
I CAN'T STOP LOV-ING YOU, - I'VE MADE UP MY



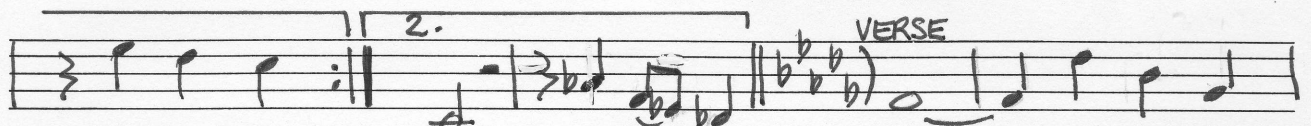
MIND - TO LIVE IN MEM-O-RY OF OLD LONE-SOME TIMES. -



- I CAN'T STOP WANT-ING YOU, - IT'S USE-LESS TO SAY, -



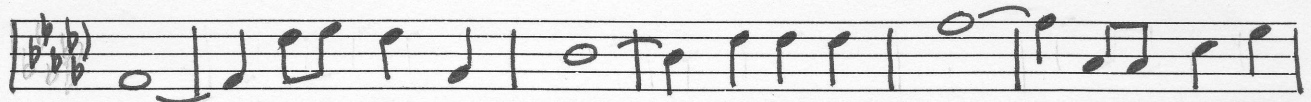
SO I'LL JUST LIVE MY LIFE IN DREAMS OF YES-TER - DAY



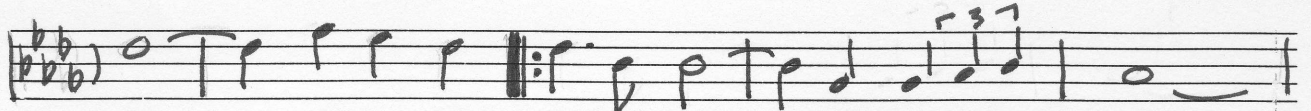
I CAN'T STOP DAY. THOSE HAPPY HOURS - THAT WE ONCE



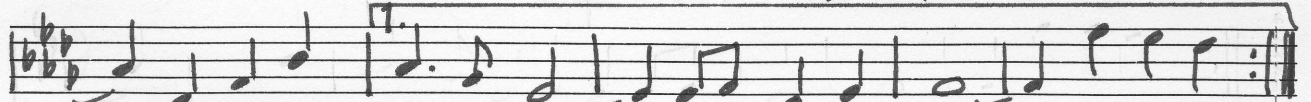
KNEW THU' LONG A - GO, - STILL MAKE ME BLUE. THEY SAY THAT



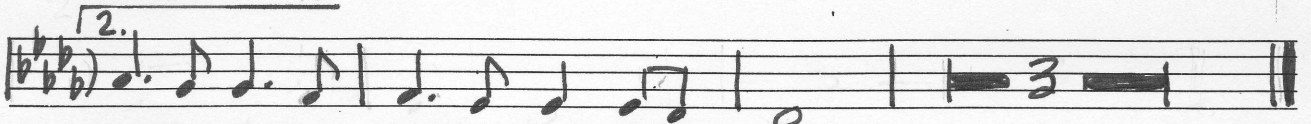
TIME HEALS A BRO-KEN HEART, BUT TIME STOOD STILL SINCE WE'VE BEEN A -



PART. - I CAN'T STOP LOVING YOU, - THERE'S NO USE TO TRY. -
WANT-ING YOU, - THE WAY THAT I DO. -



- PRE-TEND THERE'S SOME-ONE NEW; - I CAN'T LIVE A LIE I CAN'T STOP
- THERE'S ON-LY



BEEN ONE LOVE FOR ME, THAT ONE LOVE IS YOU.

3RD TROMBONE

I CAN'T STOP LOVING YOU

Don Gibson

arr. Jimmy Lally

Slowly with expression

Handwritten musical notation for the first system. It features a bass clef, a common time signature (C), and a 1-measure rest. The melody begins with a series of eighth notes, followed by a half note. A dynamic marking of *p* (piano) is written below the first measure, and *mf* (mezzo-forte) is written below the second measure. Above the staff, the word *soli* is written. The first ending bracket is marked with *r37*. A second ending bracket is marked with *hush mute*.

Handwritten musical notation for the second system, consisting of two staves. The top staff continues the melodic line with various note values and slurs. The bottom staff contains rhythmic accompaniment with eighth and sixteenth notes, some marked with accents.

Handwritten musical notation for the third system, consisting of two staves. The top staff continues the melodic line. The bottom staff contains rhythmic accompaniment. A dynamic marking of *mf* is present. The word *OPEN* is written above the bottom staff.

Handwritten musical notation for the fourth system, consisting of two staves. The top staff begins with a first ending bracket marked *1.* and a second ending bracket marked *2.*. The word *VERSE* is written above the staff. A dynamic marking of *mf* is written below the staff. The word *soli* is written above the staff.

Handwritten musical notation for the fifth system, consisting of two staves. The top staff continues the melodic line. The bottom staff contains rhythmic accompaniment. A dynamic marking of *f* (forte) is written below the staff.

Broadly CHORUS

Handwritten musical notation for the sixth system, consisting of two staves. The top staff continues the melodic line. The bottom staff contains rhythmic accompaniment. A dynamic marking of *f* is written below the staff.

Handwritten musical notation for the seventh system, consisting of two staves. The top staff continues the melodic line. The bottom staff contains rhythmic accompaniment.

Handwritten musical notation for the eighth system, consisting of two staves. The top staff continues the melodic line. The bottom staff contains rhythmic accompaniment.